

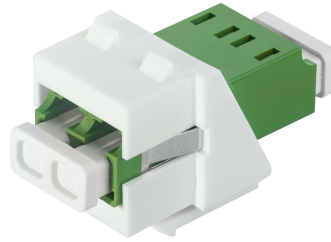
## PRODUCTPROFILE

**Catalogue number: 120A0365**

Partnumber: 20101798

---

LC-Duplex SM APC adapter green  
with keystone adapter



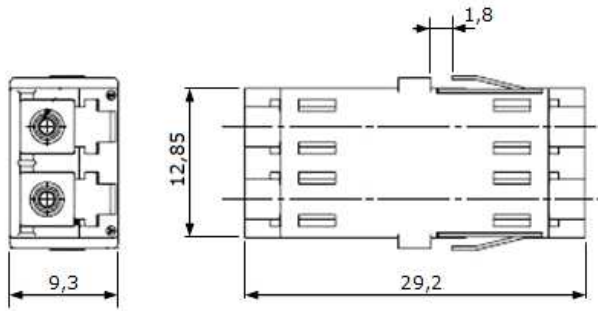
**Related documents:**

DS\_LCD\_KUPPLUNG\_K02\_OE

LCD Kupplung

LC-Duplex Adapter  
(sen./sen.) without flange

98 LCK8 LC-K02-XX



All dimensions are in mm; tolerances acc. ISO 2768 m-H

**Properties**

The LC is a small-Form-Factor connectivity system for applications which require a high packaging density.

**Interface**

LC Adapter, acc. to DIN EN 61754-20

**Material for Adapter**

Housing : Plastic  
Sleeve : Ceramic

**Optical data**

Insertion Loss : S/M <0.20 dB  
M/M <0.20 dB

**Mechanical data**

Mating cycle > 500

**Environmental data**

Operation temperature range -40°C...+85°C  
Storage temperature range -40°C...+85°C

**Part Number**

Type	Color	Part Number
Singlemode 9/125, PC	blue	98LCK8 LC-K02-bu
Singlemode 9/125, APC	green	98LCK8 LC-K02-gn
Multimode, 50/125, OM2	black	98LCK8 LC-K02-bk
Multimode, 50/125, OM3	turquoise	98LCK8 LC-K02-tk
Multimode, 50/125, OM4	violett	98LCK8 LC-K02-vt
Multimode, 62.5/125	beige	98LCK8 LC-K02-be

**Packaging**

Standard packaging

While the information has been carefully compiled to the best of our knowledge, nothing is intended as representation or warranty on our part and no statement herein shall be construed as recommendation to infringe existing patents. In the effort to improve our products, we reserve the right to make changes judged to be necessary.

Draft	Date	Approved	Date	Rev.	Engineering change number	Name	Date
Y.Zhang	08.02.2017	H.Jungbäck	08.02.2017	001	---	Y.Zhang	08.02.2017